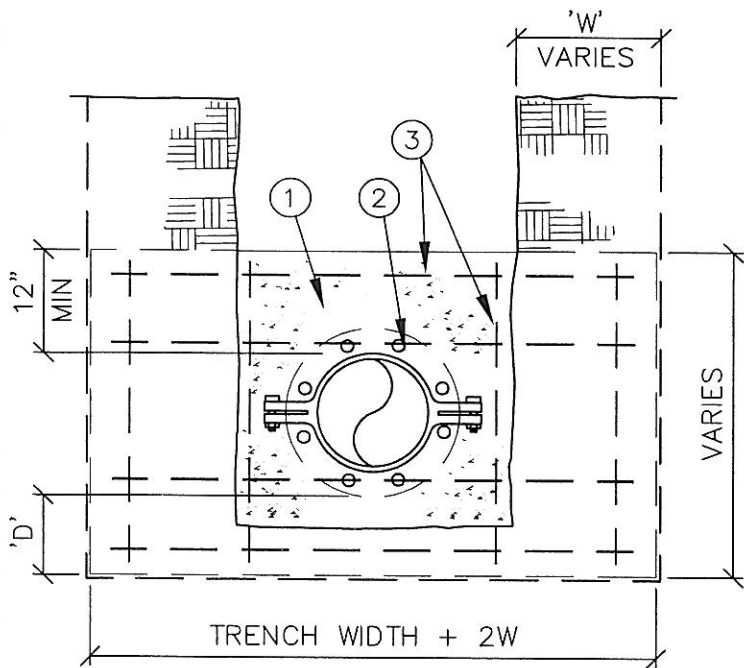


TOP VIEW



FRONT VIEW

MATERIALS

- ① CONCRETE STRADDLE BLOCK.
- ② UNI-FLANGE, SERIES 900, CL.125
- ③ #4 REBAR EA. WAY, 12" O.C.
- ④ RETAINER GLAND.
- ⑤ MJ FITTING, VALVE OR BLOWOFF.

PIPE SIZE	'W'	'D'	'T'
6"	12"	8"	12"
8"	16"	10"	12"
10"	20"	12"	12"
12"	24"	18"	18"
>12"	BY ENGINEER		

NOTES:

1. STRADDLE BLOCKS FOR >10" PIPE SHALL BE DESIGNED INDIVIDUALLY BY THE ENGINEER AND SHALL BE BASED ON THE FOLLOWING:
 - a.) 200 PSI WATER PRESSURE.
 - b.) SOIL BRG. CAPACITY, STEEL SIZE & SPACING BY THE ENGINEER.
2. BEARING AREA OF BLOCK SHALL BE AGAINST UNDISTURBED SOIL.
3. STRADDLE BLOCK SHALL HAVE A MINIMUM OF 18" COVER.
4. CONCRETE SHALL HAVE A MIN. 28 DAY STRENGTH OF 3300 PSI.

LAST REVISION DATE:

DEC 2004

COPYRIGHT 1996
WESTECH ENGINEERING, INC.

STRADDLE BLOCK FOR
12" AND SMALLER PIPE

(NTS)

JUNCTION CITY, OR

DETAIL NO

511