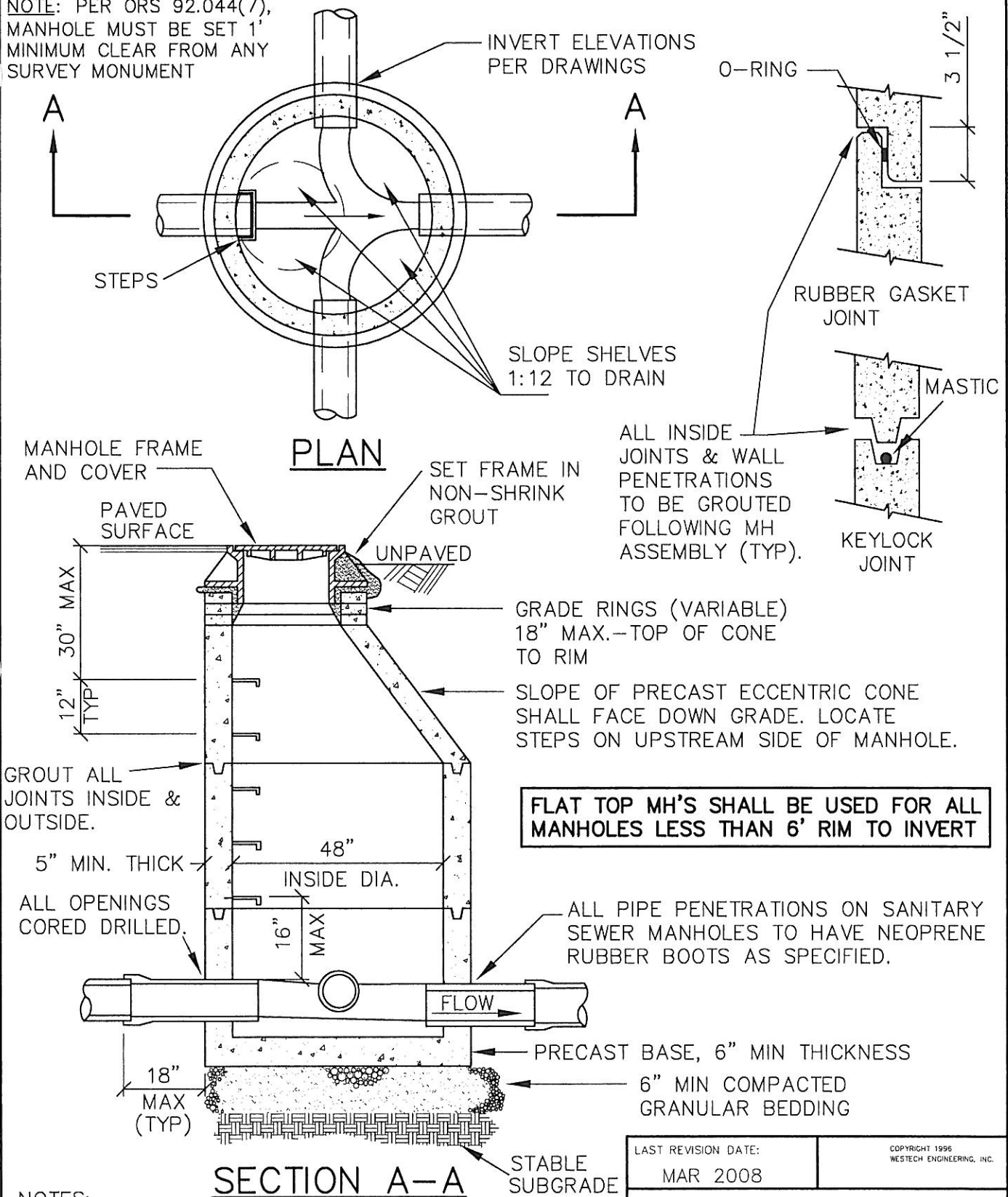


NOTE: PER ORS 92.044(7),
MANHOLE MUST BE SET 1'
MINIMUM CLEAR FROM ANY
SURVEY MONUMENT



FLAT TOP MH'S SHALL BE USED FOR ALL MANHOLES LESS THAN 6' RIM TO INVERT

NOTES:

1. PRECAST SECTIONS SHALL MEET OR EXCEED ASTM C-478.
2. WATERTIGHT O-RING OR MASTIC KEYLOCK JOINTS REQUIRED.
3. STEPS TO BE FACTORY INSTALLED POLYPROPYLENE PLASTIC WITH GRADE 60 REINFORCING ROD.

LAST REVISION DATE: MAR 2008	COPYRIGHT 1996 WESTECH ENGINEERING, INC.
STANDARD MANHOLE FOR 21" PIPE AND SMALLER	
(NTS)	
JUNCTION CITY, OR	DETAIL NO. 401