

1/2" DIA GALVANIZED
DEBRIS RODS, GROUT
INTO CURB @ BASE

TOP OF CURB

BOTTOM OF INLET
1-1/2" BELOW
NORMAL GUTTER
LEVEL

SUBGRADE
ELEVATION

10" MIN.
18" MAX.

6"

6" 30" 6"

NORMAL SLOPE
OF PAVEMENT

SUBGRADE
DRAIN

10" MIN.
24" MAX.

6" 23" 6"

STUD ANCHORS
3 MIN.

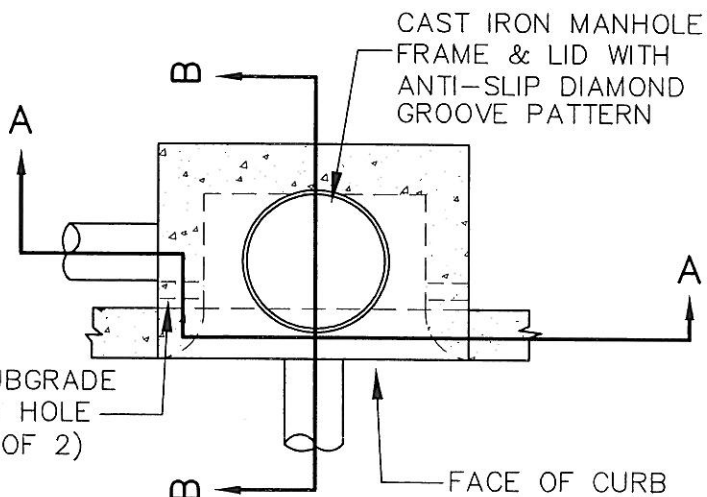
1/4" x 3-1/2" x 1" GALVANIZED
STEEL CHANNEL W/ANCHORS

2%

4' 6" MAX. (RIM TO INVERT)

SECTION A-A

SECTION B-B



PLAN

NOTES:

1. SEE CONSTRUCTION DRAWINGS FOR PIPE SIZE, LOCATION AND INVERT ELEVATION.
2. ALL CONCRETE TO BE 3500 PSI @ 28 DAYS.
3. MATCH EXISTING CURB UNLESS OTHERWISE NOTED.

LAST REVISION DATE:
DEC 2004

COPYRIGHT 1996
WESTECH ENGINEERING, INC.

STANDARD CURB-INLET
CATCH BASIN

(NTS)

JUNCTION CITY, OR

DETAIL NO.
310